

LAN-RACK

Installation manual



LANRACK

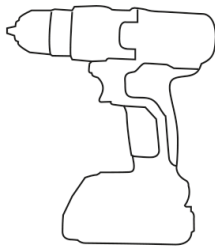
Note : Periodically check that all fasteners and components are securely tightened
 If the Cabinet was purchased assembled, it is the owner's responsibility, before insatalling any active Component the Cabinet for the first time, to make sure the Cabinet has been assembled and adjusted exactly as written in this manual, and any "Special Instructions" supplied and to make sure all fasteners and components are securely tightened.

Note: Images are only for simutaion. The images shown may not match your product's color.

Introduction

- ✓ This Owner's Manual is made for several different cabinet
- ✓ Some illustrations may vary slightly from the actual product
- ✓ Follow instructions completely.
- ✓ If the cabinet has any parts that are not described in this manual, look for separate "Special Instructions" that are supplied with the cabinet.
- ✓ Models may have different accessory items such as Perforated Front Door, Glass Door, Adapter etc.
- ✓ Please read through this entire manual before beginning assembly or maintenance

Tools Needed



Drill Screwdriver



Torx Screwdriver Bit T25



Phillips Screwdriver Bit

Parts Assembly List

	(16U-22U)		(26U-47U)	
	W=600	W=800	W=600	W=800
M5x15 Phillips Countersunk	32	32	32	32
M5 X12 Torx External 6-lobe	24	24	28	44
M12X85 Adjustable Feet	4	4	4	4
Bottom Cover	1	1	1	1
Top Cover	1	1	1	1
Vertical Profile	4	4	4	4
Side Support Rails	0	0	2	2
W=800 Adapter	0	0	0	4
19" Mounting Rails	4	4	4	4
Solid Side Panel	2	2	2	2
Solid Rear Panel	1	1	1	1
Front Door	1	1	1	1
Perforated Front&Rear Door	0	0	0	0
Rear Door Holder	2	2	2	2
Rear Door Fixer	2	2	2	2
Track Link Part	4	4	4	4

LAN-RACK

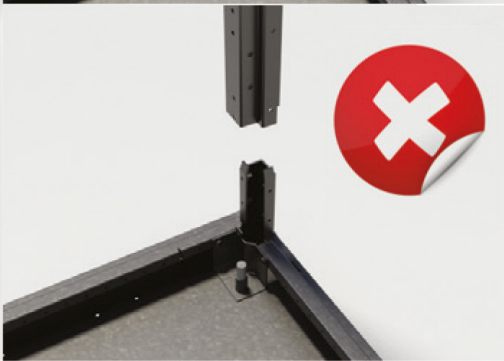
Assembling Adjustable feet on the Bottom Sheet



Assembling Vertical Profiles



Please insert each Vertical Profile as shown picture.

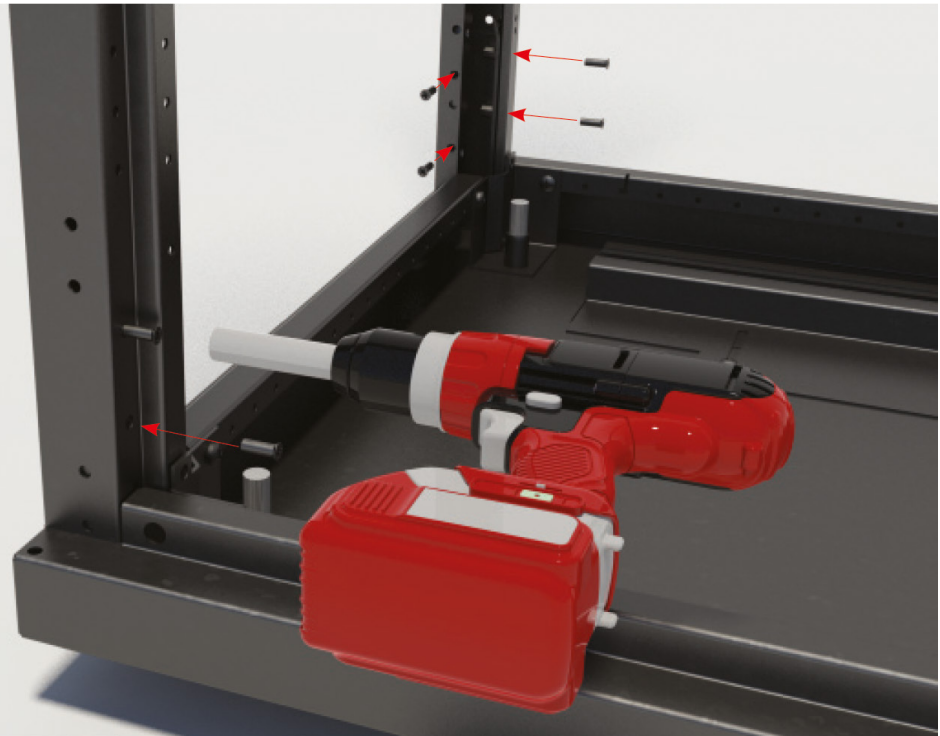


LAN-RACK

Assembling Vertical Profiles

After inserting the Vertical Profiles please fix it from two side as shown on the picture with M5x12 Phillips Countersunk

Do not over-tighten. This will damage the bolt



Assembling Side Support Rails

Fix Left and Right Supporting Rails with 4 M5 X12 Torx External (6-lobe)

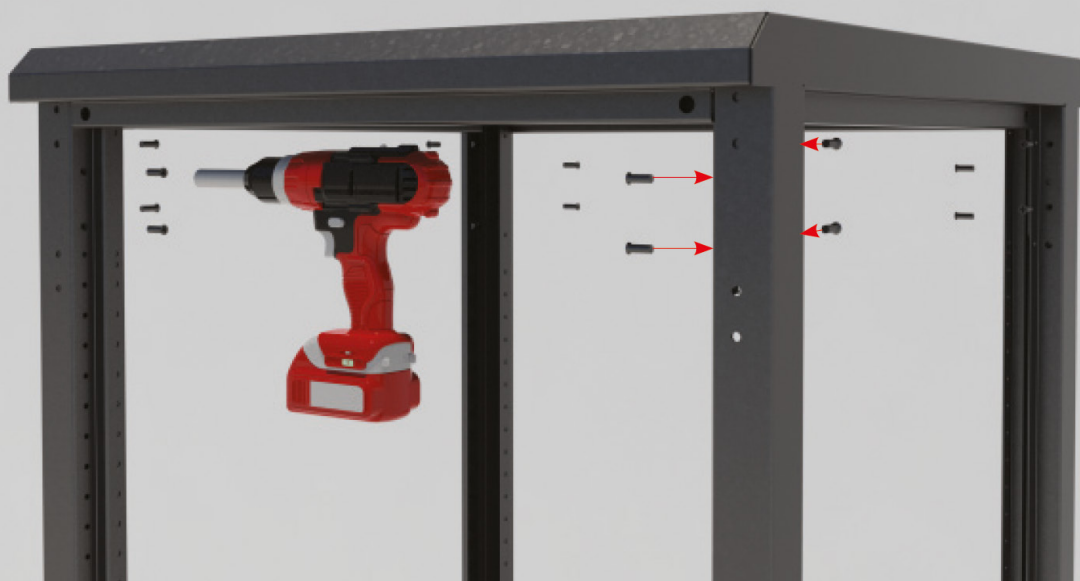


LANRACK

Assembling Top Cover



After inserting Top
Cover, please fix it from
two side as shown on
the picture with M5x12
Phillips Countersunk



Assembling Rear Door

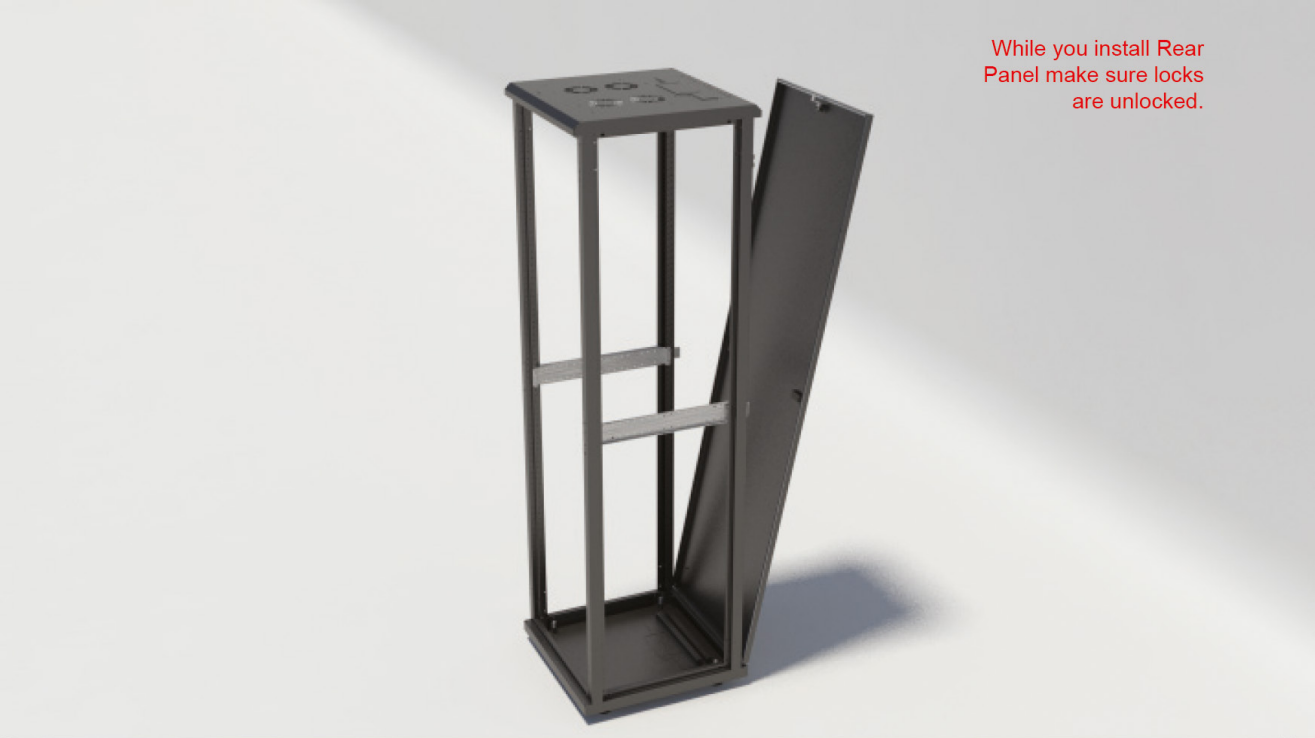
Fix the Rear Door Holder
M5 X12 Torx External
(6-lobe)



Fix the Rear Door Fixer
M5 X12 Torx External
(6-lobe)



LAN-RACK



While you install Rear Panel make sure locks are unlocked.



Please first put lugs in hole which is on the bottom frame as shown on the picture

LANRACK



LAN-RACK

Fix the Mounting Rails to the Top Cover with M5 X12 Torx External (6-lobe)



Assembling 19" Mounting Rails for 800 width

Fix Adapters on Side Support Rails for left and right side each Adapter has to be fixed with M5 X12 Torx External (6-lobe)

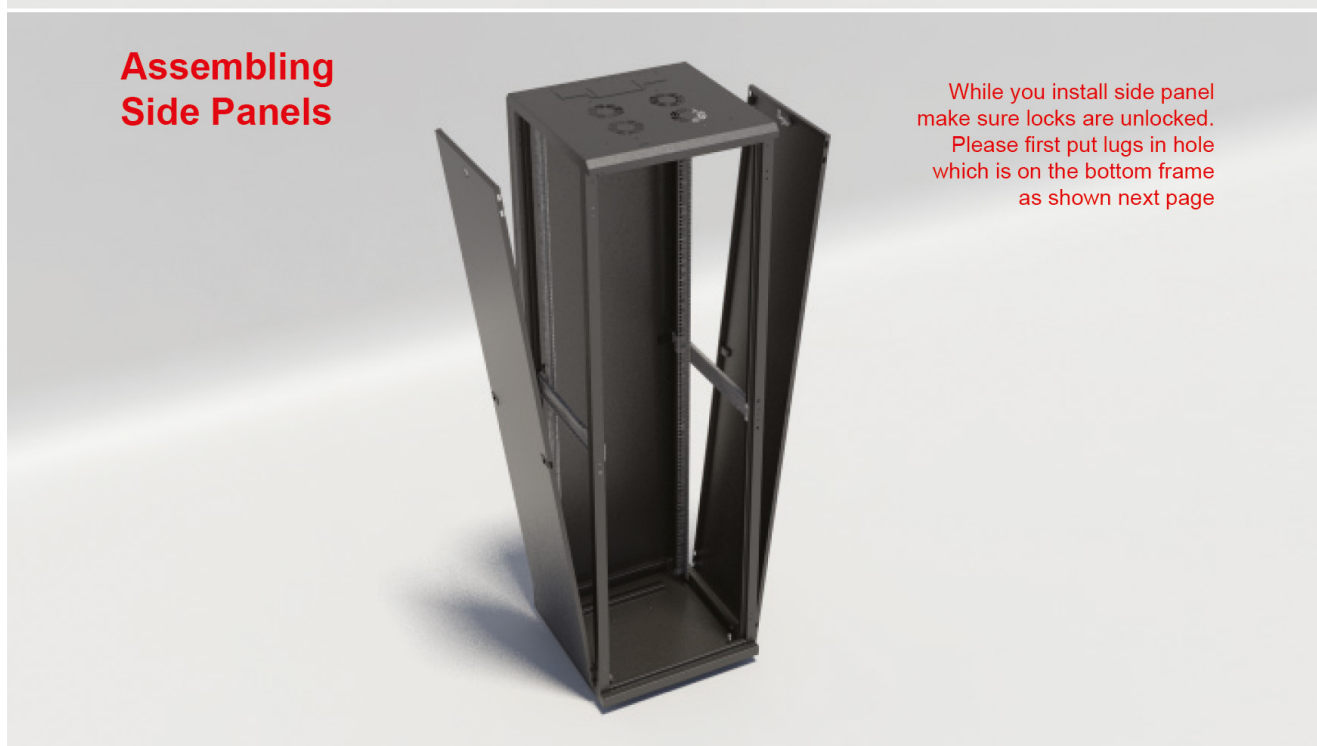


LANRACK



Fix the 19" Mounting Rails
on the adapters from 3 points
First one to the Adapter
Second one Bottom Cover and
Third point to the Top Cover

Assembling Side Panels

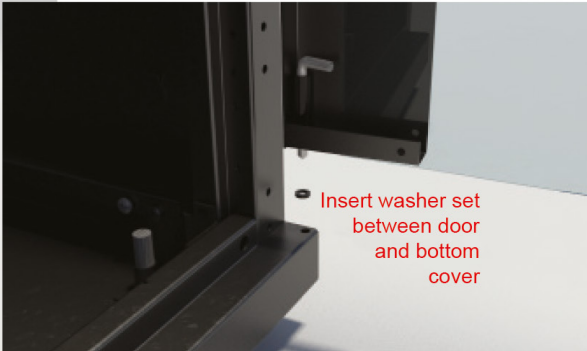
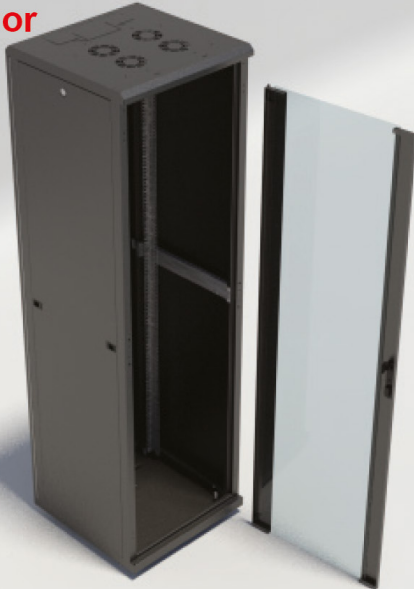


While you install side panel
make sure locks are unlocked.
Please first put lugs in hole
which is on the bottom frame
as shown next page

LAN-RACK



Assembling Front Door



LAN-RACK



LAN-COM
Intelligent dataabling

Hasellunden 7
2765 Smørum
Telefon 44 57 07 87
Email: lan-com@lan-com.dk